

ROLLED STEEL MOTOR

TM

CEM

APPLICATIONS:

AIR CONDITIONING EQUIPMENT

PACKAGING EQUIPMENT

BUSINESS MACHINES

FANS AND BLOWERS

FARM EQUIPMENT

GEAR REDUCERS

COMPRESSORS

CONVEYORS

PUMPS

TOOLS

STANDARD FEATURES

BALL BEARINGS

NEMA MG1 Part 31

HIGH STARTING TORQUE

SQUIRREL CAGE ROTOR

THREE-PHASE 2, 4, 6POLE, 60Hz

CONTINUOUS DUTY, 40°C AMBIENT

SERVICE FACTOR 1.15 OR BETTER

DESIGNED TO OPERATE IN ANY POSITION

High Efficiency Rolled Steel Motors



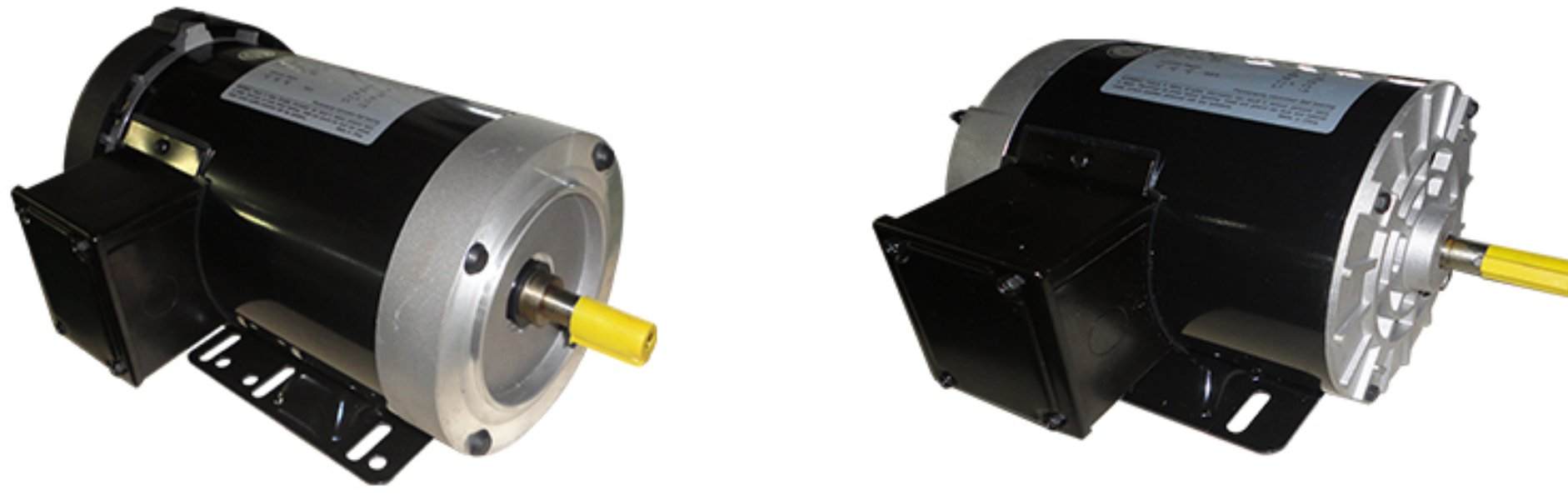
CONNEX ELECTRIC MOTORS

Division of Connex Ind. Corp.

4975 Avalon Ridge Parkway, Suite 200
Norcross, GA 30071, USA



ROLLED STEEL MOTOR

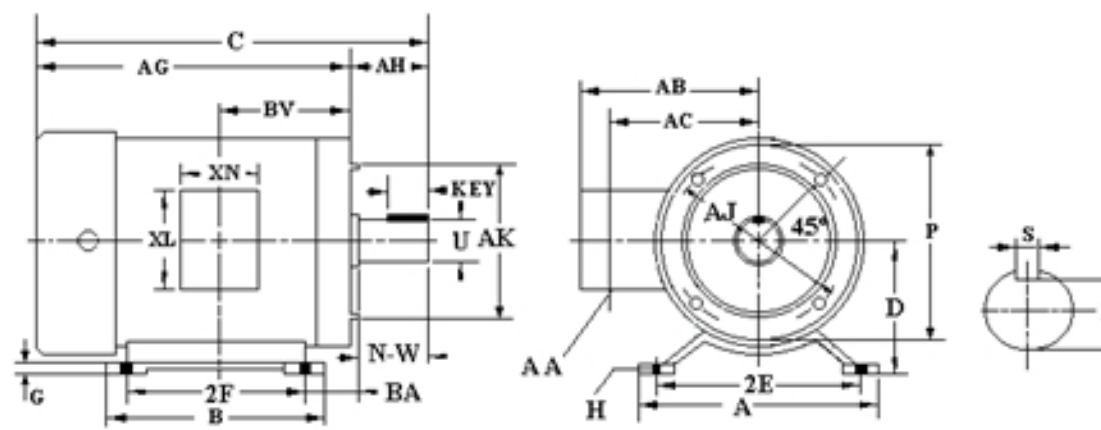


PERFORMANCE DATA

Three Phase, 50/60Hz, 208-230/460V, NEMA Design B, High Efficiency

TEFC, TENV, Class F Insulation, 40°C Ambient, Continuous Duty, 1.15 Service Factor. Foot Mount & Round Body

HP	Frame	Full Load RPM	Efficiency %	Power Factor	Full Load Amps	Locked Rotor Amps	VAC	LRT/TN	BRT/TN	C Dim in inches	Approx Weight (lbs)	Enclos.
1/3	56C	3450	60.0	0.75	1.6-1.5/0.75	4.3	208-230/460	2.7	3.0	12.3	21	TEFC
	56C	1725	68.5	0.60	1.7-1.6/0.8	4.3	208-230/460	2.8	3.6	12.3	21	TEFC
	56C	1165	63.0	0.50	2.4-2.1/1.05	6.3	208-230/460	3.0	3.5	11.1	23	TEFC
1/2	56C	3450	66.5	0.87	2.3-2.2/1.1	4.5	208-230/460	2.0	2.7	12.3	21	TEFC
	56C	1725	74.0	0.64	2.2-2.0/1.0	10.0	208-230/460	3.0	3.5	12.3	24	TEFC
	56C	1160	69.0	0.58	2.8-2.5/1.25	10.0	208-230/460	2.7	3.4	11.1	24	TEFC
3/4	56C	3450	72.5	0.87	3.0-2.9/1.45	6.2	208-230/460	2.1	2.8	12.3	22	TEFC
	56C	1725	76.0	0.60	3.3-3.0/1.5	12.0	208-230/460	2.8	3.4	12.3	25	TEFC
1	56C	3510	76.0	0.80	3.3-3.1/1.55	15.0	208-230/460	2.4	3.2	12.3	25	TEFC
	56C	1725	75.0	0.68	4.0-3.6/1.8	13.0	208-230/460	2.8	3.3	12.3	27	TEFC
1 1/2	56C	3450	79.7	0.88	4.4-4/2	20.0	208-230/460	2.5	3.2	12.3	28	TEFC
	56C	1725	78.2	0.68	5.8-5.2/2.6	20.0	208-230/460	2.8	3.4	12.3	31	TEFC
2	56C	3510	82.1	0.82	6.2-6.0/3	25.0	208-230/460	2.7	3.1	12.3	32	TEFC
	56C	1725	78.9	0.75	6.4-6.2/3.1	25.0	208-230/460	2.7	3.3	13.8	37	TEFC



DIMENSIONAL DATA

Frame	Mounting							Conduit Box			Motor Dimension					Keyseat			Bearings		Enclos.	
	D	E	2F	A	B	BA	H	AB	XL	XN	AH	AJ	AK	P	N-W	U	R	S	KEY	ODE		DE
56C	3.5	2.4	3.0	6.5	6.5	2.75	1.22X.34	5.47	3.78	3.31	1.88	5.866	4.5	7.44	1.88	0.625	0.516	0.188	1.42	6203Z	6203Z	TEFC